



Year 1 Spring 2

Street Detectives

Why is Tuebrook called Tuebrook?



English

Genre: Poetry – Pattern and Rhyme and Information Texts

Key Text: Scouse Mouse has Lost his House

We will be learning to:

- Hear, read and respond to rhymes and simple patterned stories.
- Join in with and 'perform' the rhymes in a variety of ways.
- Capture language ideas
- Write a simple patterned text.
- Write simple patterned texts, following a specific pattern or within an appropriate frame.
- Plan and write a recount of a local area walk.
- Identify and display the key features of simple information texts.
- Make an information leaflet.
- Plan, draft, edit and review.

You can help your child by:

Read with your child frequently and complete the weekly homework as this supports the work we are doing in school. Attend the Year One Reading Workshop to find out how to support your child. Make use of the online library to support reading at home.

- <https://ebooks.collinsopenpage.com/>

Maths

Additive Structures

- Pupils combine 2 or more parts to make a whole.
- Pupils can explain that addends can be represented in any order and the = sign can be used to show that the whole and sum of the parts are equal.
- Pupils find the missing addend
- Pupils partition a whole into two parts and express this with a subtraction equation.
- Pupils make addition and subtraction stories and write equations to match this.
- Pupils explain that addition and subtraction are inverse operations.

Addition and Subtraction Facts

- Pupils explain that addition is commutative
- Pupils find pairs of numbers to 10.
- Pupils add and subtract 1 from any number.
- Pupils can explain what the difference is between consecutive numbers.
- Pupils can explain what happens when 2 is added or subtracted from odd and even numbers.
- Pupils can explain what the difference is between consecutive odd and even numbers.
- Pupils explain what happens when zero is added to or subtracted from a number.
- Pupils explain what happens when a number is added to or subtracted from itself.
- Pupils double numbers and explain what doubling means
- Pupils halve numbers and explain what halving means.
- Pupils use knowledge of doubles and halves to calculate near doubles and halves.
- Pupils represent different types of stories with subtraction calculations.
- Pupils use knowledge and strategies to add 5 and 3 and 6 and 3.

You can help your child by:

Complete the weekly homework as this supports the work we are doing in school. Make use of everyday maths opportunities such as counting coins, spotting odd and even numbers and playing card games such as higher or lower. Attend the Year One Maths Workshop to find out how to support your child. Make use of Times Tables Rocks Stars <https://ttrockstars.com/>

Science

Focus: Materials

We will be learning;

- Revising the different materials learnt from the previous term e.g. wood, plastic, glass, metal, water, and rock
- Carry out investigations when exploring a wide variety of materials (not only those listed but including for example: brick, paper, fabrics, elastic, foil)
- Name some objects made from these materials and describe the simple physical properties
- Compare and group together a variety of everyday materials on the basis of their simple physical properties.

You can help your child by;

- Talking about, asking and answering questions about everyday materials so that they become familiar with the names of materials and properties such as: hard/soft; stretchy/stiff; shiny/dull; rough/smooth; bendy/not bendy; waterproof/not waterproof; absorbent/not absorbent; opaque/transparent.



PE

Focus: Gymnastics and Dance

- In gymnastics we will be developing balance, agility and co-ordination in solo, partner and group work.
- We will develop jumping, balancing, rolling, travelling, leaps and weight bearing as well as sequence work.
- Copying and exploring basic actions with some control and coordination
- Responding to stimuli using dance actions.
- Linking and repeat basic actions to copy or create and perform a movement phrase in a controlled manner with a beginning, middle and end.
- Learning the importance of a warm up and cool down.

You can help your child by:

- Allowing your child to become independent with dressing themselves.
- Why not sign up for an after school club?



Art

Focus: Drawing - First hand observations of key buildings in local area.

Artist link: Paul Klee

We will be learning:

- To use lines (long/short, straight, wavy eg feather), shapes and patterns (continued patterns - animal print or repeated patterns to show texture of - material/sponge) to represent ideas and what seen.
- To add detail in my drawings (eg more detail in facial features, anatomy, and different lines to show texture)
- To begin to talk about how texture has been created
- To begin to show an order of space/relationships
- To begin to use perspective in my drawings e.g. when drawing landscapes, buildings

You can help your child by:

- Drawing at home using different mediums.



RE



Theme: Psalm Sunday

Concept: Salvation

Key Question: Why was Jesus welcomed like a King or celebrity by the crowds on Palm Sunday?

Religion: Christianity

We will be learning to:

- Know that Jesus is special to Christians and how his welcome on Palm Sunday shows this.
- Should people follow religious leaders and teachings?
- Are symbols better than words at expressing religious beliefs? (Believing/Behaving)

You can help your child by:

- Look for signs of new life in creation.

PSHE



Theme: Healthy Me

We will be focusing on:

- Keeping myself healthy
- Healthier lifestyle choices
- Keeping clean
- Being safe
- Medicine safety/safety with household item
- Road Safety
- Linking health and happiness

You can help your child by:

- Encouraging your child to reflect on their school day and talk about their feelings.
- Celebrate success with your child and encourage a culture of feeling proud of one another.

Geography

Focus: My Local Area – Fieldwork and Human and Physical Geography

We will be learning to:

- Investigate my locality (local area) through fieldwork and make simple observations.
- Know the four compass points NSWE.
- Use plans, maps, globes, atlases and aerial images to recognise some features and places (in my locality/ in the wider world).
- Talk about/ describe a locality using some appropriate vocabulary e.g. features, location, geographical characteristics such as weather and what happens there).
- Ask and answer some questions to help me investigate.
- Explore different types of housing in my local area.
- Use basic geographical vocabulary

You can help your child by:

- Finding out where your child lives using a map.
- Help your child to learn their address.
- Use google maps and find your home.



Music



Combining Pulse, Rhythm and Pitch

How does music help us to understand our neighbours?

We will be learning to:

- Combine pulse, rhythm and pitch.
- To use our voices expressively and creatively by singing songs and speaking chants and rhymes.
- Celebrating a wide range of musical styles.
- Listening, singing, playing, composing and performing.

You can help your child by:

- Encouraging your child to be musical at home. Use junk materials to make your own instruments and sing songs.



Computing

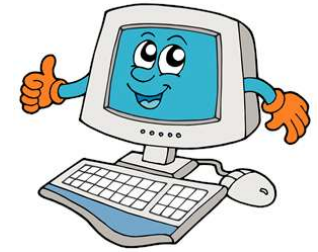
Focus: Pictograms and Maze Explorers

We will be learning to:

- To understand that data can be represented in picture format.
- To contribute to a class pictogram.
- To use a pictogram to record the results of an experiment.
- To understand the functionality of the basic direction keys and use them.
- To understand how to create and debug a set of instructions (algorithm).
- To understand how to change and extend the algorithm list.
- To create a longer algorithm for an activity

You can help your child by:

Remind your child to use technology safely. Remember to make use of Collins E-library to support your child's reading, Times Tables Rock Stars to support Maths and Purple Mash to support all curriculum work. Every child in our school has a unique login to allow them to access a wealth of free fun educational resources to support their learning experience.



Children's logins can be located on their reading folder.



<https://www.purplemash.com/sch/listerinf>

<https://ebooks.collinsopenpage.com/>

<https://trockstars.com/>

Research Questions

Here are some questions you may wish to research with your child to support our topic this term

**How many churches are there in your local area?
Why is this house on West Derby Road so special?**



Super challenge!

Where does the water go when it leaves the Brook in Tuebrook?

Further details of our curriculum can be found on the school website

<https://listerinfants.org.uk/curriculum/>