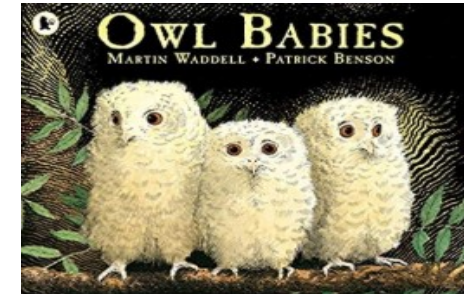




Year 2 Summer 1

Wonderful Woodland

Why are squirrels suited a woodland?



### English

**Genre:** Poetry – Silly Stuff and Recount

**Key Text:** Owl Babies

**We will be learning to:**

- Hear and read silly poems and other humorous texts that play with language, for example riddles, language puzzles, jokes, nonsense sentences, etc.
- Respond to these examples of language play in a variety of ways, for example through dance, drama and art.
- Encourage the children to discuss what they think is funny or surprising and think about the way the writer has chosen and used words to achieve this effect.
- Children perform some of the poems, jokes, silly sentences and riddles, individually or together, using actions and sound effects where appropriate to add to the humour.
- Capture language ideas and learning to use and apply in the writing phase.
- Identify and display the key features of the poetry explored.
- Through modelled and shared composition, explore language through play and experimentation, orally and then in writing. Include word games, silly sentences, jokes, humorous rhymes, etc.
- Focus on devices such as alliteration, onomatopoeia, puns and word-play, etc., as well as repeated patterns, sentence/verse 'starters', etc., with the emphasis on the playful and surprising selection of words and phrases.
- Develop imaginative and adventurous vocabulary and language choices.
- Model how to write silly poems or passages as a way of exploring language use.
- Children write their own silly poems or passages as a way of exploring language use.
- Plan, draft, edit and review silly sentence poems.

**You can help your child by:**

Read with your child frequently and complete given homework as this supports the work we are doing in school. Make use of Active Learn to support reading at home.

<https://www.activelearnprimary.co.uk>

### Maths

**Focus: Position and Direction and Problem Solving**

**We will be learning to:**

- Use mathematical vocabulary to describe position, direction and movement including movement in a straight line and distinguishing between rotation as a turn and in terms of right angles for quarter, half and three-quarter turns (clockwise and anti-clockwise).
- Order and arrange combinations of mathematical objects in patterns and sequences.
- Consolidation and problem solving. Investigations

**You can help your child by:**

Complete given homework as this supports the work we are doing in school. Make use of everyday maths opportunities such as counting coins, spotting odd and even numbers and playing card games such as higher or lower. Make use of Times Tables

Rocks Stars <https://trockstars.com/>

## Science

### Focus: Living things and their habitats

#### We will be learning:

- To identify that most living things live in habitats to which they are suited and describe how different habitats provide for the basic needs of different kinds of animals and plants, and how they depend on each other.
- To identify and name a variety of plants and animals in their habitats, including woodland and seashore.

#### You can help your child by:

- Researching woodland animals and their needs such as squirrels and rabbits.
- Exploring local habitats and discuss the different animals that can be found there. Can the children discuss how the habitat supports the animal?



## PE

### Focus: Swimming, Athletics, Yoga

#### We will be:

- Developing water confidence.
- Learning about water safety.
- Learning different strokes including front crawl and back stroke.
- Master basic movements including running, jumping, throwing and catching.
- Developing balance, agility and co-ordination, and begin to apply these in a range of athletic activities.
- Engage in competitive (against self and others) and co-operative physical activities in a range of increasingly challenging situations.
- Apply skills, develop competence and develop confidence.
- Developing our balance, flexibility and co-ordination.

#### You can help your child by:

- Allowing your child to become independent with dressing and undressing themselves.
- Exercise with your child regularly.
- Why not sign up for an after school club this term?



## Art

### Focus: Sculpture

#### We will be learning:

- To manipulate malleable materials in a variety of ways e.g. rolling, kneading and shaping.
- To experiment with, construct and join recycled, natural and man-made materials more confidently.
- To use a range of materials creatively to design and make products
- To use sculpture to develop and share their ideas, experiences and imagination
- About the work of a range of artists, craft makers and designers, describing the differences and similarities between different practices and disciplines, and making links to their own work.
- Evaluate and analyse creative works using the language of art, craft and design

#### You can help your child by:

- Researching the work of Anthony Gormley.
- Make sculptures at home using different materials.
- Why not visit the Art Gallery?

## RE



**Theme:** Community and Belonging

**Key question:** Does going to a mosque give Muslims a sense of belonging?

**Religion:** Islam

### We will be learning:

- To understand why Muslims visit the mosque and to explore whether this gives them a sense of belonging.
- Does it feel special to belong?
- Who do I believe I am? (Believing/Behaving)

### You can help your child by:

- Showing respect to different religions.

## PSHE



**Theme:** Relationships

### We will be focusing on:

- Different types of family
- Physical contact boundaries
- Friendships and conflict
- Secrets
- Trust and appreciation
- Expressing appreciation for special relationships

### You can help your child by:

- Encouraging your child to reflect on their school day and talk about their feelings.
- Celebrate success with your child and encourage a culture of feeling proud of one another.

## Geography

**Focus:** Geographical Skills and Fieldwork

### We will be learning:

- Use world maps, atlases and globes
- Use simple compass directions, locational and directional language
- Use aerial photographs and plan perspectives to recognise landmarks and basic human and physical features; devise a simple map; and use and construct basic symbols in a key
- Use simple fieldwork and observational skills to study the geography of their school and its grounds and the key human and physical features of its surrounding environment (locality link)

### You can help your child by:

- Exploring maps, globes and atlases.
- Identify human (man-made) and physical (natural) features in the local area.



## Music



- Use our voices expressively and creatively by singing songs and speaking chants and rhymes.
- Learn to play the recorder and recognise simple notes.
- Listen with concentration and understanding to a range of high-quality live and recorded music
- Experiment with, create, select and combine sounds using the inter-related dimensions of music.

### You can help your child by:

- Encouraging your child to be musical at home. Use junk materials to make your own instruments and sing songs. Listen and appraise different types of music.

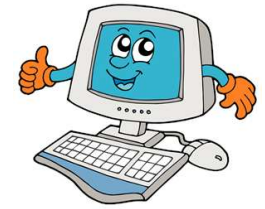


## Computing

**Focus:** Using software to produce charts

**We will be learning to:**

- Sort and classify a group of items by answering questions.
- Collect data using tick charts or tally charts.
- Use simple charting software to produce pictograms and other basic charts.
- Take, edit and enhance photographs.
- Record information on a digital map.
- Use technology safely and respectfully, keeping personal information private and identify where to go for help and support when they have concerns about content or contact on the internet or other online technologies.



**You can help your child by:**

Remind your child to use technology safely. Remember to make use of Active Learn to support your child's reading, Times Tables Rock Stars to support Maths and Purple Mash to support all curriculum work. Every child in our school has a unique login to allow them to access a wealth of free fun educational resources to support their learning experience.

**Children's logins can be located on their reading folder.**



<https://www.purplemash.com/sch/listerinf>

<https://www.activelearnprimary.co.uk>

<https://trockstars.com/>

## Research Questions

Here are some questions you may wish to research with your child to support our topic this term

**How is a squirrel suited to living in a woodland?**

**What animals would live in the natural habitat of Formby Beach?**

**What makes a great photograph?**

**What type of art do you like? (Sculpture, abstract or modern)**

**How fast did the fastest sprinter run the 100m sprint?**



Further details of our curriculum can be found on the school website <https://listerinfants.org.uk/curriculum/>