

Adverbs with the suffix **-ly**

Adverbs tell us more about the verb in a sentence.

The girl sweetly sang the song

Lots of adverbs are made by adding the suffix **-ly** to an adjective.

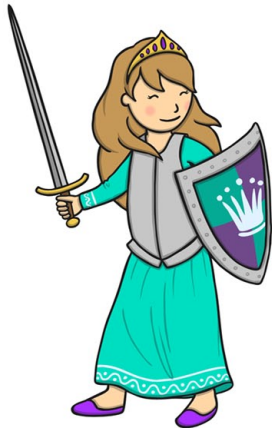
kind - **kindly**

slow - **slowly**

happy - **happily**

Remember - if the adjective ends in **y** we need to change the **y** to an **i** and then add **-ly**!

Add **-ly**



sad - sadly
brave - bravely
safe - safely
wise - wisely



Change the **y** to an **i** then add **-ly**



merry - merrily
angry - angrily
crazy - crazily
lazy - lazily

